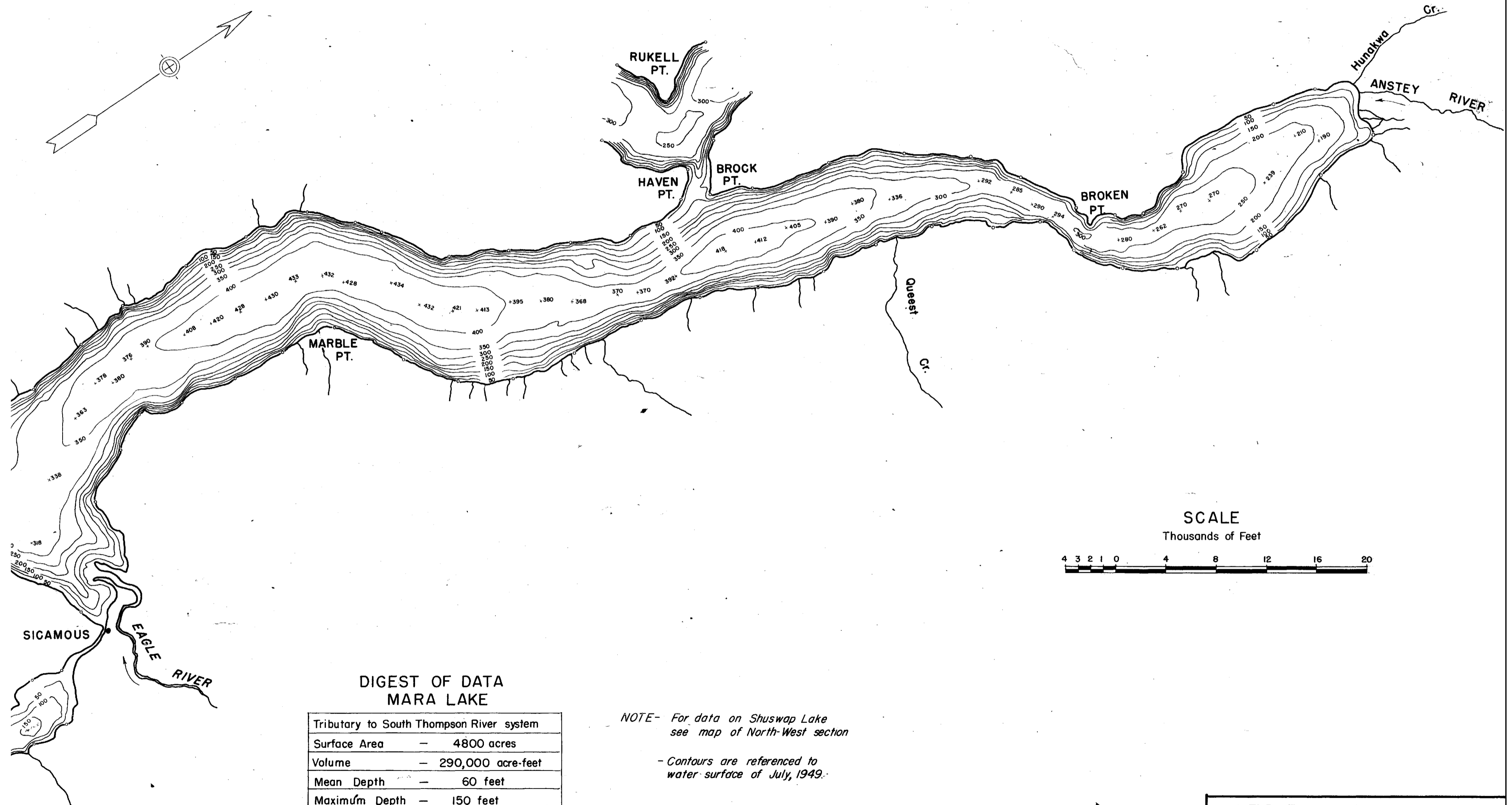


CAUTION: DO NOT USE THIS MAP FOR NAVIGATIONAL PURPOSES
This map may not reflect current conditions. Uncharted hazards may exist.



**DIGEST OF DATA
 MARA LAKE**

Tributary to South Thompson River system	
Surface Area	— 4800 acres
Volume	— 290,000 acre-feet
Mean Depth	— 60 feet
Maximum Depth	— 150 feet
Watershed Area	— 3500 square miles
Mean Elevation	— 1139

NOTE- For data on Shuswap Lake see map of North-West section

- Contours are referenced to water surface of July, 1949.

INTERNATIONAL PACIFIC SALMON
 FISHERIES COMMISSION

**SHUSWAP LAKE
 SOUTH-EAST SECTION
 BOTTOM CONTOURS**
 (SHEET 1 OF 2)